



豐煜油壓機械股份有限公司

FONYU MACHINERY CO., LTD



油壓 · 沖壓機械專業製造

Professional Manufacturer for
Hydraulic and Mechanical Press



P01-02 公司簡介及沿革
Company & Milestones

P03 企業文化 / 技術研發
Culture of Enterprise /
Research & Development

P04 精密的加工設備
Culture / Research Development /
Precision Equipment

P05-06 堅強實力展現及產品介紹
A Display of Strong Will /
Products

P07 機械式無曲軸沖床
2-Point / 4-Point Eccentric
Press Production Line

P08 機械式曲軸門型沖床
FDP Series Mechanical Straight
Side Crank Press

P09 油壓深絞成型機
Hydraulic Deep Drawing Press

P10 油壓合模機
Hydraulic Die-Spotting Press

P11-12 H型直壁式沖床
H Frame Crank Press

P13-14 高精度多連桿式沖床
High Precision Link Motion Press

P15-16 C型雙曲軸沖床
C Type Double Crank Press

P17-18 機械式C型單曲軸沖床
C Type Single Crank Press

公司名稱：豐煜油壓機械股份有限公司
工廠地址：桃園市龍潭區三和里店湖一路90號
工廠面積：2700坪(8928m²)
建物面積：2500坪(8267m²)
員工人數：60人(2017年12月止)

Company Name : Fonyu Machinery Co.,Ltd
Factory Address : No.90, Diann Hwu 1st Rd, Sanho Village,
Lungtan Hsiang ,Taoyuan Hsian, Taiwan, R.O.C
Factory Area : 2700 pings(8928m²)
Building Area : 2500 pings (8267m²)
Number of Employee : 60 person (Dec. 2017)



服務項目：

- 機械式C型單曲軸沖床
- 機械式C型雙曲軸沖床
- 機械式門型雙曲軸沖床
- 機械式無曲軸沖床
- 自動送料、取料設備
- 機械式門型連桿式沖床
- 機械式C型連桿式沖床
- 油壓式金屬深絞成型機
- 油壓式合模機
- 油壓式SMC成型機
- 直壁式沖床
- 高精度多連桿式沖床

Main Products :

- C Type Single Crank Press
- C Type Double Crank Press
- Straight Side Double Crank Press
- Two & Four Point Eccentric Press
- Automatic Feeding Equipment
- C Type Link Motion Press
- Straight Side Link Motion Press
- Hydraulic Deep Drawing Press
- Hydraulic Die Spotting Press
- SMC Hydraulic Press
- H Frame Crank Press
- High Precision Link Motion Press



豐煜股份有限公司重大事記

正式成立『上達機械公司』，主要生產油壓金屬成型機，以及油壓機械修理、改裝。

正式更名為『豐煜油壓機械股份有限公司』。

正式開發並生產機械式金屬沖壓機台。

開始首次外銷機台至加拿大、以色列、東南亞以及中國大陸等全球市場。

購買龍潭土地廠房8928平方米。

完成廠房建設2645平方米。

正式自台北縣樹林進駐桃園龍潭廠區。

增設廠方第二期工程1155平方米，以及辦公室、員工宿舍2145平方米。

購買CNC#200地板式搪銑床機，以及ATC#130搪銑床機。

#130、#200安裝試車完成，正式投入生產。

增設廠房設施2315平方米。

增購進口#100地板式電腦搪銑床機。

與日本KAWASAKI重油工簽訂正式合作關係。

與美國SUTHERLAND PRESS簽訂合作OEM開發美洲市場。

正式開發生產四點式1600噸大型機械式無曲軸沖床。

正式開發生產四點式2000噸以上大型機械式無曲軸沖床，提供大平板連續模生產

正式開發四點式2400噸以上大型機械連桿式沖床。

IN

FONYU Milestones

1975

Established San-Ta Machinery Co., Ltd. Mainly focused on manufacturing hydraulic deep-drawing press and press repairing or refitting in addition.

1979

Renamed as FONYU MACHINERY CO., LTD.

1983

Introduced mechanical press for production.

1987

Made global debut in the market of Canada, Israel, Mainland China, Southeast Asia.

1988

Acquired present location 8928 square meters in Lungtan Township.

1989

Accomplished factory floor 2645 square meters.

1990

Moved to new facility in Lungtan, Taoyuan County.

1991

Extended factory floor 1155 square meters and office facility 2145 square meters.

1992

Invested #200 Floor-typed boring and militing machines, and #130 ATC boring and milling machines.

1993

Installed #130 and #200 floor-typed boring & milling machines.

1994

Acquired #100 Floor-typed boring & milling machines.

1995

Signed the friendly partnership with Kawasaki Hydromechanics Corporation.(In Japan)

1996

Extended factory floor 2315 square meters.

1998

Signed the OEM relationship with Sutherland Press in USA.

2002

Introduced 1600tons 4-Point Eccentric Mechanical presses.

2007

Introduced 2000tons 4-Point Eccentric Mechanical presses for progressive-die production.

2014

Developed 2400tons 4-Point Link-Motion Mechanical press.

以人為本、共創未來 Human resource

人為企業之本，是企業最重要的資產，『惜才·用才·留才』是本公司延攬人才的信念，並透過教育訓練等方式，提高人員素質，讓每位同仁能發揮所長，人盡其才。

豐煜公司的同仁都是一群共同開創事業的夥伴，秉持著『共同經營，共同成長，共享利潤』的經營理念，併肩奮鬥，共創永續經營的願景。

People are the root of an enterprise, who is also an important asset of the enterprise. "Be fond of talent people, use right talent people, and keep talent people" are the conception of this company to maintain the talent people. This company also give people education and training to upgrade personnel quality such that each one is able to produce one's effort and does one's best. All persons in FONYU MACHINERY company are partners jointly creating their career. They adhere to the concept of "Running Business, Growing Up and Sharing Profit All Together" to strive for the promis-ing prospect of long-lasting business.



研發部門
Research Department



研發技術

Research & Development

日新又新、研發創新 The Innovation

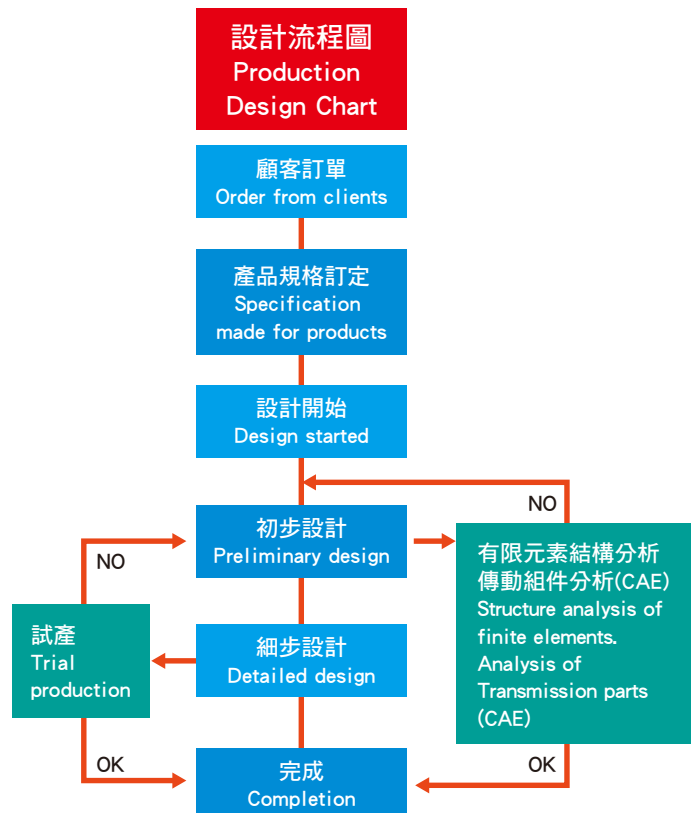
『精益求精，追求至善』是本公司研發產品的理念，豐煜擁有高素質的研發團隊，不遺餘力的投入新產品研發，我們深信唯有不斷的研發，創新，才能提昇企業的競爭力。

「品質是企業存續的命脈」。在環環相扣的製造過程中，每個細節更是馬虎不得，因此在每個過程中，設有品檢檢查站，徹底落實「全員品管、人人品管」的理念，以建立產品在客戶心中良好的聲譽。

"Try the best to achieve the best" is the basic concept for this company to make research and development for products. Having high quality R & D team, Fonyu Company invests its resource into the R & D of products. We are confident that competitiveness of the enterprise can only be strengthened by con-tinuuous research, development and innovation.

"Quality is a matter of great importance to every enterprise's development. "The links of every procedure are very important to production ; every detail should be taken care of every single person in FONYU.

For this, we set up quality-check stations in every process to establish good reputation in our products.



專業分工、務本踏實 Corporate with one another in every expertise

高精度的加工設備，才能製成高品質的產品，本公司擁有多台CNC搪銑床，CNC車床，CNC中心加工機及其他多種自動化加工設備，每年固定投資設備更新，提高加工效率及精度。

In consideration that the high precise processing equipment produce high quality product, this company equips it self with many CNC milling, CNC lathes, CNC machine center and other automatic processing equipment. This company also makes regular investment to replace the equipment so as to enhance processing efficiency and precision.



#100號CNC搪銑床
#100 CNC boring & milling machine



CNC 門型銑床
CNC milling machine



CNC 車床
CNC lathe



#200 號 搪銑床
#200 milling machine

追求卓越、領先群倫 Seeking for the Best

一向對品質不遺餘力的豐煜公司，除了推行5S活動、進料管制、流程管制等標準化作業程序外，在1997年取得了ISO 9001的認證，及CE認證的許可。

為貫徹『品質第一，追根究底』的全員品質共識，除加強內部控制管理，更逐步改善企業經營體質，在一步一腳印，經年累月的努力下，目前已在國內外市場樹立良好的口碑，贏得客戶對豐煜產品的信賴。

FONYU MACHINERY does its best to produce best quality products. Besides practicing 5S activities and standardizing control procedures of raw materials and production processes, the company has obtained ISO 9001 and CE's approvals since 1997. In order to achieve all personnel's realization of "Quality First, Bottom Exploration", this company makes every effort day by day and footstep by footstep to enhance the internal control and gradually improve the physique of the enterprise. So far it has established a widely known reputation in both of the domestic and foreign markets thus gained customers reliability on the FONYU MACHINERY products.



研發部門
Research Department



汽車鈹金生產線應用實例(沖床線)
Car Plating Application (Press Line)

產品介紹

Products

客戶滿意、全力以赴 Customer Satisfaction

優質的產品、合理的價格、準確的交期、貼心的售後服務，是客戶取決產品的重要條件。

豐煜公司為研發自主及自製能力具備的沖壓、油壓專業製造廠，在產品的整合系統中是採一貫化的作業系統。另外在售後的維修服務上，除定期派員做維修檢驗外，也落實一通電話、當天服務的理念，以確保客戶使用的品質及最大的經濟效益。

Best quality product, reasonable price, prompt delivery date, and intimate after-sales service are of great importance to customers. In order to develop automatic mechanical and hydraulic press production.

FONYU MACHINERY uses integrated production system. In after-sales services, besides doing maintenance check regularly, we also practice same day service on every call, to ensure that our products maintain the best quality.



油壓機和2點 / 4點式無曲軸沖床鈹金生產線
Hydraulic Press & 2-Point / 4-Point
Eccentric Press Production Line



電子 PCB 電路板自動沖床設備
PCB Automatic Production Equipment

C型沖床電腦殼機械手生產線
C Type Press Computer Chassis
Production Line



H型直壁式沖床
H Frame Crank Press

油壓汽車鈹金生產線
Hydraulic Press Production Line
for Car Plating





機械式無曲軸沖床

2-Point / 4-Point Eccentric Press Production Line

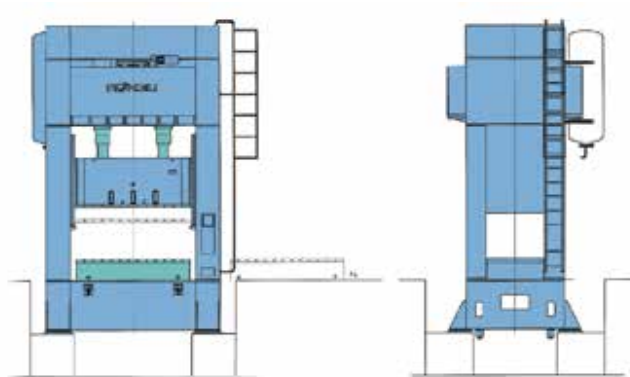
FLP-500~2400 TONS

應用範圍

一般適合於沖壓行程較長之中大型汽車鈹金件沖壓成型工作。

Application

Applicable for car body chassis component.



主要規格與尺寸 Specification And Dimensions

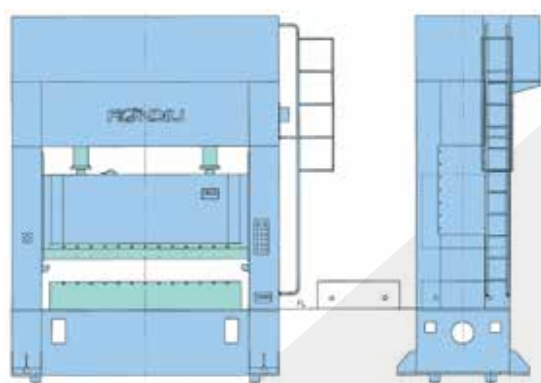
型式	Model	FLP2-500 FLP4-500	FLP2-600 FLP4-600	FLP2-800 FLP4-800	FLP2-1000 FLP4-1000	FLP4-1200	FLP4-1600	FLP4-2000	FLP4-2400
噸數	Capacity ton	500	600	800	1000	1200	1600	2000	2400
衝力發生點	Tonnage rating point m.m	13	13	13	13	13	13	13	13
行程長	Length of stroke m.m	500 650	500 650	650 850	650 850	850	900	900	900
行程數	Stroke per minute S.P.M	15~25	15~25	10~20	10~16	10~15	10~15	10~15	10~15
閉合工作高度	Shut height m.m	900 1200	900 1200	900 1200	1200 1500	1200 1500	1200 1500	1200 1500	1200 1500
衝頭調整量	Adjustment of slide m.m	400	400	400	600	600	600	600	600
衝頭底面面積	Area of slide m.m	1200×2500	1200×2500	1200×2500	1800×3600				
		1400×2800	1400×2800	1400×2800	2000×4000	2000×4000	2000×4000	2000×4000	2000×4000
		1600×3200	1600×3200	1600×3200	2200×4500	2200×4500	2200×4500	2200×4500	2200×4500
		1800×3600	1800×3600	1800×3600	2500×5000	2500×5000	2500×5000	2500×5000	2500×5000
平板面積	Area of bolster m.m	1200×2500	1200×2500	1200×2500	1800×3600				
		1400×2800	1400×2800	1400×2800	2000×4000	2000×4000	2000×4000	2000×4000	2000×4000
		1600×3200	1600×3200	1600×3200	2200×4500	2200×4500	2200×4500	2200×4500	2200×4500
		1800×3600	1800×3600	1800×3600	2500×5000	2500×5000	2500×5000	2500×5000	2500×5000

所有規格及外型尺寸，本公司保有修改權利

We reserve all rights to maintain or modify the specification and size of products.

機械式曲軸門型沖床

FDP Series Mechanical Straight Side Crank Press



主要規格與尺寸 Specification And Dimensions

型式	Model	FDP-200	FDP-250	FDP-350	FDP-400	FDP-500	FDP-600	FDP-800							
噸數	Capacity ton	200	250	350	400	500	600	800							
行程長	Length of stroke m.m	200 300	200 300	250 350	300 400	350 450	350 450	380 450							
行程數	Stroke per minute	Fixed speed	Variable speed	S.P.M	30	30	25	25	20	25	20	20	20	20	20
					30~60	20~40	25~50	20~40	20~40	15~30	20~40	15~25	15~30	15~25	15~30
衝力發生點	Tonnage rating point m.m	6 6	7 12	7 13	7 13	7 13	7 13	7 13							
閉合工作高度	Shut height m.m	500	500	600	700	700	700	700							
衝頭底面積	Area of slide m.m	1800x1150	1800x1150	2700x1500	2800x1500	2800x2000	2800x2000	3000x2000							
		2000x1150	2000x1150	2250x1150	2800x1500	3000x1500	3000x2000	3000x2000	3500x2000						
衝頭調整量	Adjustment of slide m.m	150	150	200	200	250	250	250							
平板面積	Area of bolster m.m	1800x1150	1800x1150	2700x1500	2800x1500	2800x2000	2800x2000	3000x2000							
		2000x1150	2000x1150	2250x1150	2800x1500	3000x1500	3000x2000	3000x2000	3500x2000						
				3000x1500	3400x1500	3500x2000	3500x2000	4000x2000							

緩衝裝置(特殊附件) DIE CUSHION(OPTIONAL)

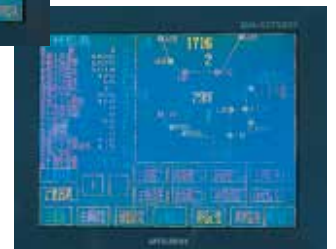
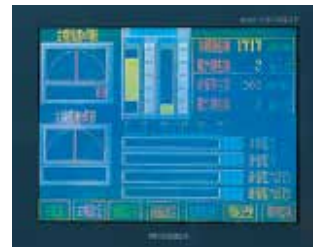
模電能力	Capacity (at 5kgf/cm ²)	xtf	16	25	50	60	70	80	80
------	-------------------------------------	-----	----	----	----	----	----	----	----

所有規格及外型尺寸，本公司保有修改權利

We reserve all rights to maintain or modify the specification and size of products.

油壓深絞成型機

Hydraulic Deep Drawing Press



觸控式螢幕(選用配備)
Touching screen panel
(Optional attachment)

主要規格與尺寸 Specification And Dimensions

形式	Model		HPM-300AD	HPM-400AD	HPM-500AD	HPM-600AD	HPM-800AD	HPM-1000AD	HPM-1500AD	HPM-2000AD	
能力	Capacity	tf	300	400	500	600	800	1000	1500	2000	
行程	Length of stroke	m.m	1500	1500	1500	1500	1500	1600	1600	1800	
最大開距	Die height	m.m	1800	1800	1800	1800	1800	2000	2000	2200	
緩衝板尺寸	Cushion plate size	m.m	900X2310	900X2310	900X2310	900X2310	900X2310	900X2310	1410X2310	2010X3510	
緩衝行程	Cushion stroke	m.m	400	400	400	400	400	400	400	400	
平板面積	Area of bolster	m.m	1500X2800	1500X2800	2000X3000	2000X3000	2000X3000	2000X3000	2000X3000	2500X4000	
主油壓缸	Main cylinders	mmxpcs	Ø300X2	Ø320X2	Ø380X2	Ø405X2	Ø460X2	Ø505X2	Ø610X2	Ø580X3	
緩衝油壓缸	Cushion cylinders	mmxpcs	Ø200X2	Ø220X2	Ø250X2	Ø280X2	Ø320X2	Ø320X2	Ø360X2	Ø380X2	
上昇油壓缸	Ascending cylinders	mmxpcs	Ø200	Ø220	Ø237X1	Ø250X1	Ø280X1	Ø280X1	Ø320X1	Ø275X2	
主系統馬達	Main motor	HPXP	50X6	75X6	100X6	125X6	150X6	150X6	100X6 150X6	200X2	
緩衝系統馬達	Cushion motor	HPXP	15X4	15X4	15X4	20X6	20X6	20X6	20X6	25X6	
輔助系統馬達	Auxiliary motor	HPXP	5X4	5X4	5X4	5X4	7.5X4	7.5X4	7.5X4X2	7.5X4X2	
主幫浦	Main pump		PV2R3-116	A7V-250	A2V-355	A2V-355	A2V-500	A2V-500	A2V-355 A2V-500	AV2-500X2	
操作壓力	Operating pressure	kg/cm ²	212	249	220	230	240	250	250	250	
平面移出裝置(選購)	油壓式馬達式	Rolling bolster stroke	Oil motor	m.m	1700	1700	1700	1700	1700	1700	1700
					2500	2500	2500	2500	2500	2500	2500
	油壓式馬達式	Rolling bolster speed	Oil motor	mm/sec	75	75	75	75	75	75	75
					125	125	125	125	125	125	125
油壓式馬達式	Rolling bolster horsepower	Oil motor	HPXPpcs	3X4X1	3X4X1	3X4X1	3X4X1	3X4X1	3X4X1	3X4X1	
				1X4X2	1X4X2	1X4X2	1X4X2	1X4X2	1X4X2	1X4X2	1X4X2

所有規格及外型尺寸，本公司保有修改權利

We reserve all rights to maintain or modify the specification and size of products.

油壓合模機

Hydraulic Die-Spotting Press



油壓合模機(中座可旋轉180度)

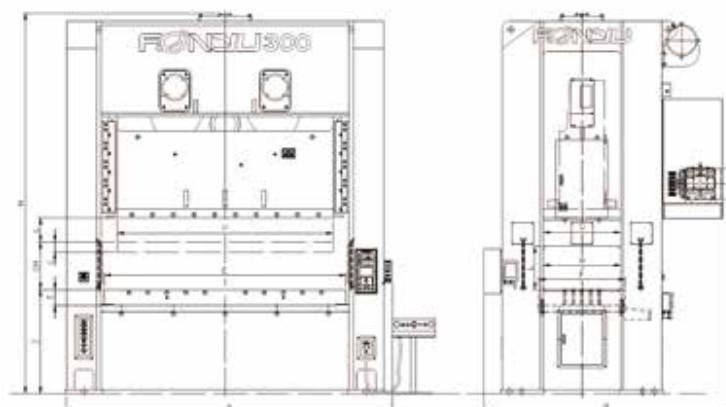
Hydraulic die-spotting press (slide turn over 180°)

從100噸到2000噸，適用在塑膠鋼模及沖壓模具

From 100 tons to 2000 tons apply in plastic steel die and punching die.

H型直壁式沖床

H Frame Double Crank Press



主要規格與尺寸 Specification And Dimensions

型式	MODEL	FDX-160		FDX-200		FDX-250		FDX-300		FDX-400		FDX-500			
		S	H	S	H	S	H	S	H	S	H	S	H		
噸數	Capacity	tf		160		200		250		300		400		500	
行程	Length of stroke	(L)mm		200	130	230	150	250	180	280	180	300	200	300	200
行程數	Stroke per minute	S.P.M		30-50	35-70	25-45	30-60	22-40	30-50	20-40	25-50	20-40	25-50	20-40	25-50
衝力發生點	Tonnage rating point	mm		6	4	7	4	7	5	7	5	7	6	7	6
閉合工作高度	Die height	(DH)mm		450	400	500	450	550	450	550	450	600	450	600	450
衝頭調整量	Adjustment of slide	(G)mm		100		110		120		120		120		120	
衝頭底面面積	Area of slide	(PxQ)mm	1560x650		1850x750		2150x800		A型2500x900		A型2500x900		A型2500x900		
			B型2800x900		B型2800x900		B型2800x900								
平板面積	Bolster area	(ExF)mm	1850x760		2200x840		2500x1000		A型2800x1000		A型2800x1100		A型2800x1200		
			B型3100x1000		B型3100x1100		B型3100x1200								
平板厚度	Thickness of bolster	(T)mm		160		170		180		180		200		200	
作業高度	Height of bolster	(Z)mm		950		1000		1100		1200		1250		1250	
主馬達(定速+變頻器)	Main motor	HPxP		20x4		25x4		30x4		40x4		50x4		60x4	
衝頭調整馬達	Motor for slide adjustment	HPxP		1x4		2x4		2x4		2x4		2x4		2x4	
側壁開口	Window opening	(WxL)mm		660 x 400		740 x 450		820 x 460		900 x 500		1000 x 550		1100 x 550	
佔地面積	Floor space required	(AxB)mm	2660x2520		3040x2520		3200x2800		A型3790x2850		A型3845x2955		A型4100x3210		
			B型4100x2850		B型4145x2955		B型4180x3210								
總高度(不含防震腳)	Over all height	(H)mm	3510	3450	3880	3830	4110	4020	4450	4350	4820	4565	5020	4770	
			4560	4460	4865	4715	5030	4780							
上模吊重	Upper die weight	kgf		1200		1500		2200		2800		3000		3200	

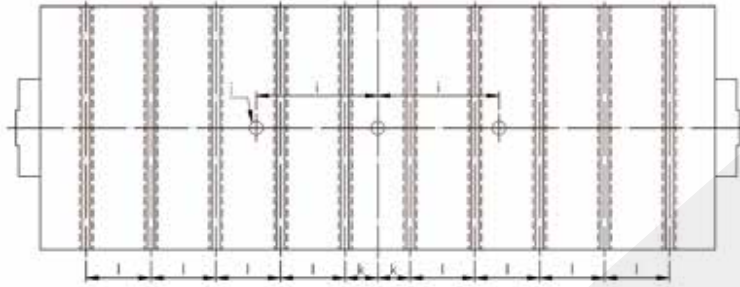
緩衝裝置(特殊附件) DIE CUSHION(OPTIONAL)

能力	Capacity (at 5kgf/cm ²)	tf	8 x 2	10 x 2	14 x 2	14 x 2	14 x 2	14 x 2
行程	Length of stroke	mm	110	130	140	140	140	140
面積	Area pad (RLx FB)	mm	560x370x2	700x450x2	700x450x2	700x450x2	700x450x2	700x450x2

所有規格及外型尺寸，本公司保有修改權利

We reserve all rights to maintain or modify the specification and size of products.

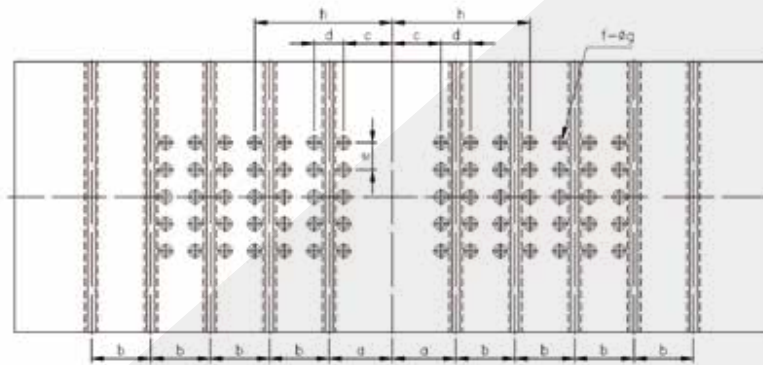
平板尺寸與衝頭底面尺寸 DIMENSIONS OF BOLSTER PLATE AND RAM



衝頭底面尺寸圖 Surface of Ram



T型槽尺寸圖
Size of T-slots



平板尺寸圖 Surface of Bolster

SPECIFICATION

型式 MODEL	FDX-160		FDX-200		FDX-250		FDX-300		FDX-400		FDX-500	
	S	H	S	H	S	H	S	H	S	H	S	H
a	200	215	235	235	235	235	235	235	235	235	235	235
b	200	220	220	220	220	220	220	220	220	220	220	220
c	150	160	180	180	180	180	180	180	180	180	180	180
d	100	110	110	110	110	110	110	110	110	110	110	110
e	100	100	100	100	100	100	100	100	100	100	100	100
f	48pcs	70pcs	70pcs	70pcs	70pcs	70pcs	70pcs	70pcs	70pcs	70pcs	70pcs	70pcs
g	Ø32	Ø32	Ø32	Ø32	Ø32	Ø32	Ø32	Ø32	Ø32	Ø32	Ø32	Ø32
h	400	490	510	510	510	510	510	510	510	510	510	510
i	400	450	450	450	450	450	450	450	450	450	450	450
J	Ø50.8	Ø50.8	Ø50.8	Ø50.8	Ø50.8	Ø50.8	Ø50.8	Ø50.8	Ø50.8	Ø50.8	Ø50.8	Ø50.8
k	120	110	120	120	120	120	120	120	120	120	120	120
l	200	220	240	240	240	240	240	240	240	240	240	240
m	28	28	28	28	28	28	28	28	28	28	28	28
n	29	29	29	29	29	29	29	29	29	29	29	29
p	20	20	20	20	20	20	20	20	20	20	20	20
q	48	48	48	48	48	48	48	48	48	48	48	48

所有規格及外型尺寸，本公司保有修改權利

We reserve all rights to maintain or modify the specification and size of products.

選擇性配備

1. 氣壓式模墊裝置
2. 快速換模裝置
3. 防震腳
4. 荷重顯示器
5. 安全桿(門)
6. 模具照明裝置
7. 照明/工具用插座

Optional Attachments

1. Pneumatic Die Cushion
2. Quick Die Change System(QDC System)
3. Anti Vibration Mounts
4. Tonnage Indicator
5. Safety Block (Door)
6. Tooling Light
7. Electrical Sockets

標準附件

1. 定速馬達+變頻器
2. 濕式煞車離合器
3. 超負荷安全裝置
4. 電動衝頭模高調整裝置
5. 電動黃油潤滑裝置
6. 衝頭平衡裝置
7. 數字式模高指示器
(最小顯示單位0.1mm)
8. 電子式凸輪控制器
9. 二度落防止裝置
10. 光電式安全裝置
11. 馬達正逆轉開關
12. 總計數器一組
13. 預調計數器一組
14. 預備凸輪8組
15. 誤送檢知接頭
16. 氣壓吹氣快速接頭
17. 維護工具箱

Standard Attachments

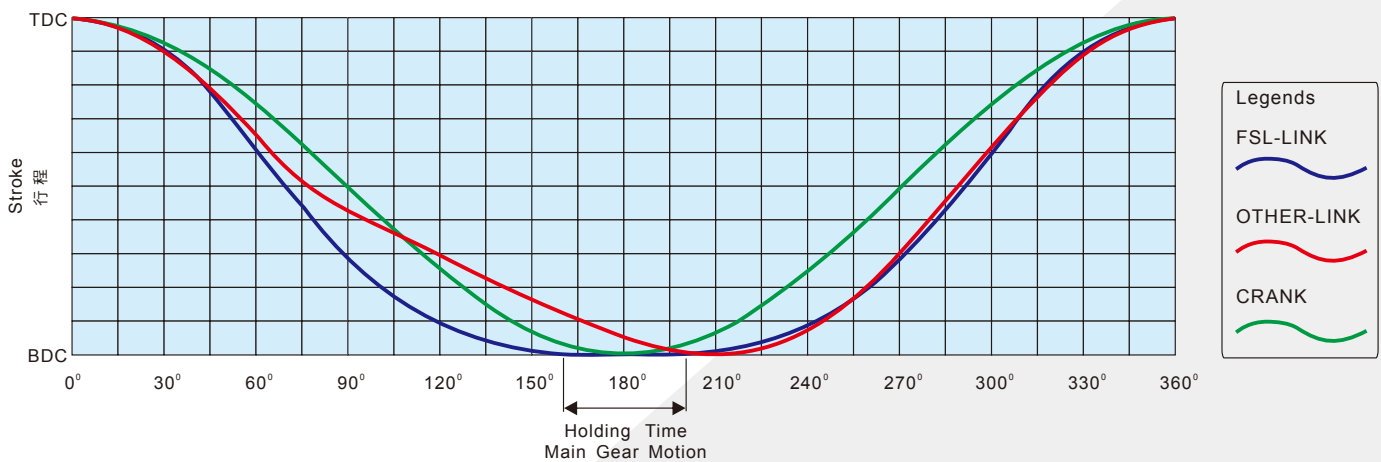
1. Main Motor With Inverter
2. Wet Clutch/Brake
3. Hydraulic Overload Protection
4. Motorized Slide Adjustment
5. Automatic Grease Lubrication System
6. Counter Balance
7. Die Height Indicator (scale unit : 0.1mm)
8. Programmable CAM Switches
9. Anti-repeat Safety Circuit
10. Light Curtains
11. Main Motor FWD/REV Controller
12. Total Counter- 1 Set
13. Preset Counter- 1 Set
14. Spare CAM- 8 Sets
15. Misfeed Socket
16. Air Outlet- 1 Set
17. Maintenance Tool Box

高精度多連桿式沖床

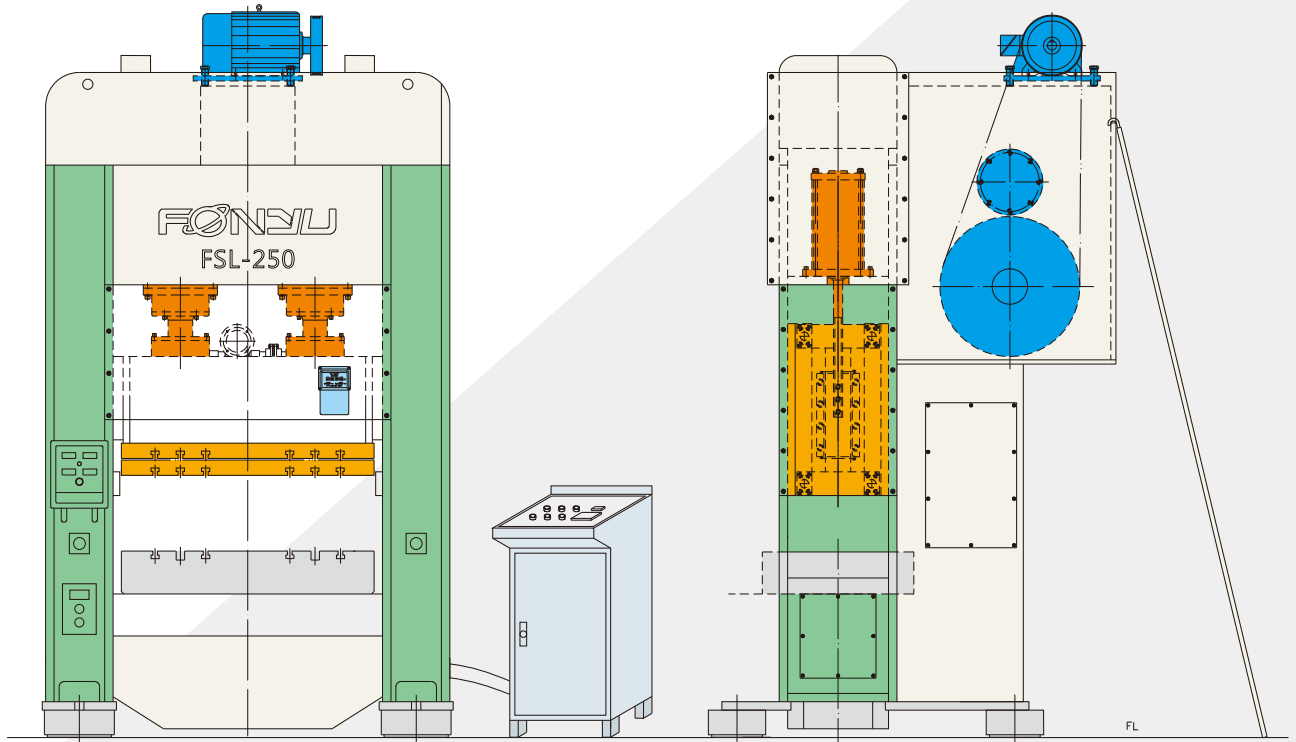
High Precision Link Motion Press



運動曲線圖 MOTION CURVE



外觀示意圖 Appearance Schematic



標準附件

1. 模具照明燈
2. 電動式衝頭調整裝置
3. 數字式模高指示裝置
4. 衝頭平衡裝置
5. 二度落防止裝置
6. 電磁式計數器
7. 氣壓式快速接頭
8. 荷重監視器
9. 馬達正逆轉功能

General Attachments

1. Die Light
2. Electrical Slide Adjusting Device
3. Die Height indicator
4. Balance Unit of slide
5. Antirepeat Safety Device
6. Magnetic Product Counter
7. Air Outlet
8. Tonnage Monitor
9. Function of Motor Forward & Reversed

選擇性配備

1. 飛輪煞車裝置
2. 安全檔塊
3. 光電安全裝置
4. 變速馬達
5. 防震腳

Optional Attachments

1. Flywheel Brake
2. Safety Block
3. Light Curtain
4. V.S. Motor
5. Shock isolator

主要規格與尺寸 Specification And Dimensions

型式	MODEL		FSL-200	FSL-250	FSL-300	FSL-400	FSL-500	FSL-600
噸數	Capacity	ton	200	250	300	400	500	600
行程	Stroke Length	mm	100	100	100	120	150	150
行程數	Operation Speed	S.P.M	50 ~ 100	50 ~ 100	50 ~ 100	40 ~ 80	30 ~ 60	30 ~ 60
能力發生點	Rating Point	mm	5	6	7	7	9	9
閉合工作高度	Die Height	mm	400	450	500	600	650	750
衝頭調整量	Slide Adjustment	mm	50	50	50	100	150	150
衝頭底面積	Slide Area	mm	1200 x 600	1500 x 700	1500 x 700	2000 x 1200	2200 x 1300	2400 x 1400
平板面積	Bolster Area	mm	1200 x 800	1500 x 900	1500 x 900	2000 x 1400	2200 x 1500	2400 x 1600
主馬達	Main Motor	kw	22	30	37	55	75	90

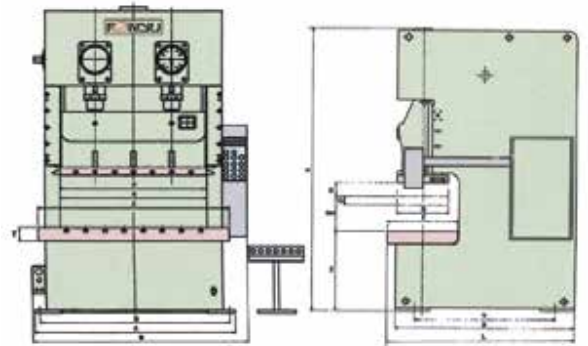
所有規格及外型尺寸，本公司保有修改權利

We reserve all rights to maintain or modify the specification and size of products.



C型雙曲軸沖床

C Type Double Crank Press



主要規格與尺寸 Specification And Dimensions

噸數	Model	FTP-110		FTP-160		FTP-200		FTP-250			
		S	H	S	H	S	H	S	H		
型式	Capacity	Tf		110	160	200	250				
行程	Length of stroke	(D)m.m.		180	110	200	130	230	150	250	180
行程數	Stroke per minute	Fixed speed	Variable speed	S.P.M							
		50	70	40	60	35	50	30	45		
		35-65	45-90	30-50	35-70	25-45	30-60	22-40	30-50		
衝力發生位置	Tonnage rating point	(B.C.D)m.m		5	6	7					
閉合工作高度	Shut height	(S.H)m.m		400	450	500					
衝頭底面積	Area of slide	(PXQ)m.m		1440X520	1560X580	1850X650					
衝頭調整量	Adjustment of slide	(G)m.m		90	100	110					
緩衝導桿孔徑	Diameter of cushion pin	m.m		Ø50.8	Ø50.8	Ø50.8					
平板厚度	Thickness of bolster	(T)m.m		150	160	170					
平板面積	Area of bolster	(EXF)m.m		1880X700	2040X780	2420X860					
作業高度	Height of bolster	(Z)m.m		900	950	1000					
主馬達	Main motor	Fixed speed	Variable speed	HPXP							
		10X4	15X4	20X4	25X4	30X4					
衝頭調整馬達	Motor for slide adjustment	HPXP		1X4	2X4	2X4					
機架尺寸	Foot size	(AXB)m.m		1960X1760	2210X2020	2522X2150					
基礎螺栓位置	Position of bolts	(MXN)m.m		1860X1410	2090X1295	2372X1440					
佔地面積	Floor space required	(WXL)m.m		2240X1820	2425X2095	2690X2250					
總高度	Over all height	(H)m.m		3080	3350	3732					
精度	Accuracy			CNS 1st	CNS 1st	CNS 1st					

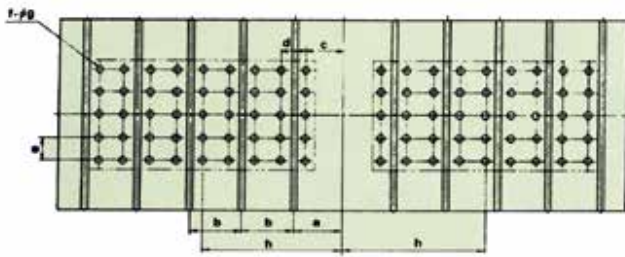
緩衝裝置(特殊附件) DIE CUSHION(OPTIONAL)

能力	Capacity (at 5kgf/cm ²)	tf	6X2	8X2	10X2	14X2
行程	Length of storke	m.m	95	110	130	140
面積	Area pad(R.L. XF.B.)	m.m	480X340X2	560X370X2	700X450X2	700X450X2

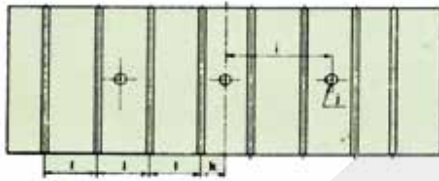
所有規格及外型尺寸，本公司保有修改權利

We reserve all rights to maintain or modify the specification and size of products.

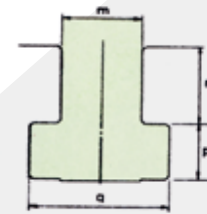
平板尺寸與衝頭底面尺寸 DIMENSIONS OF BOLSTER PLATE AND RAM



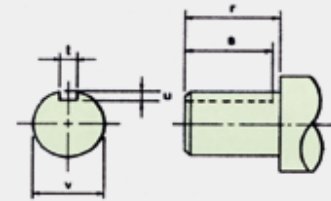
平板尺寸圖 SURFACE OF BOLSTER



衝頭底面尺寸圖 SURFACE OF SLIDE



T型槽尺寸圖 SIZE OF T-SLOT



送料軸尺寸圖 SIZE OF DRIVING SHAFT

SPECIFICATION

MODEL	FTP-110	FTP-160	FTP-200	FTP-250
a	180	200	215	235
b	180	200	220	220
c	135	150	160	180
d	90	100	110	110
e	90	100	100	100
f	48pcs	48pcs	70pcs	70pcs
g	Ø32	Ø32	Ø32	Ø32
h	360	400	490	510
i	300	400	450	450
j	Ø50.8	Ø50.8	Ø50.8	Ø50.8
k	120	120	110	120
l	240	200	220	240
m	28	28	28	280
n	29	29	29	29
p	20	20	20	20
q	48	48	48	48
r	135	135	135	135
s	100	100	10	100
t	20	20	20	20
u	7.5	7.5	7.5	7.5
v	Ø65	Ø65	Ø65	Ø65

標準附件

1. 油壓式超負荷安全裝置
2. 電動式衝頭調整裝置
3. 數字式模高指示器
4. 衝頭平衡裝置
5. 旋轉凸輪控制器
6. 二度落防止裝置
7. 電磁式計數器
8. 誤送檢知裝置
9. 氣壓快速接頭
10. 電燈插座
11. 維護工具

選擇性配備

1. 自動送料軸
2. 氣壓式模墊裝置
3. 光電式安全裝置
4. 無段變速馬達
5. 頂料裝置
6. 腳踏開關
7. 氣壓式吹料裝置
8. 預計式計數器
9. 防震腳

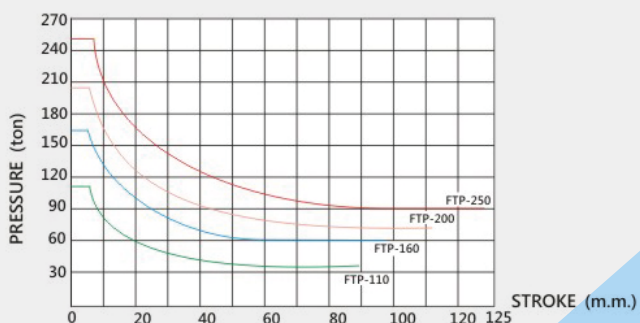
General Attachments

1. Hydraulic Overload Protector.
2. Electrical Ram Adjusting Device.
3. Die Height Indicator.
4. Balancers Unit of Slide.
5. Rotary Cam Limit Switch.
6. Antirepeat Safety Device.
7. Magnetic Strokes Counter.
8. Miss Feed Detector .
9. Air Outlet.
10. Electrical Socket.
11. Maintenance Tools.

Optional Attachments

1. Driving Shaft of Self Feeder.
2. Pneumatic Die Cushion.
3. Photoelectric Safety Device.
4. Variable Speed Motor.
5. Knockout Device.
6. Foot Switch.
7. Air Ejector.
8. Preset Counter.
9. Shock Isolator.

STROKE AND PRESSURE CURVE



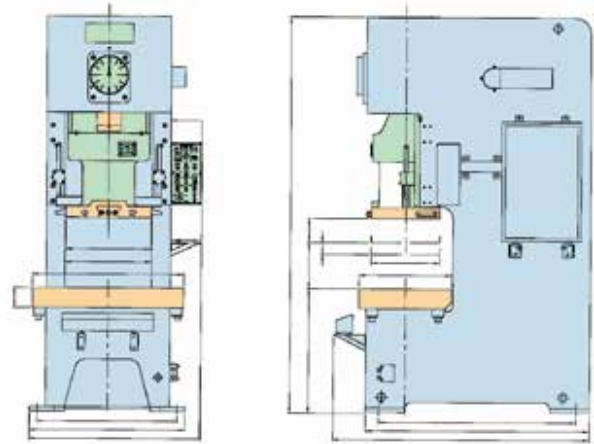
MODEL	STROKE	TONNAGE RATING POINT
FTP-110	180	5
FTP-160	200	6
FTP-200	230	7
FTP-250	250	7

所有規格及外型尺寸，本公司保有修改權利

We reserve all rights to maintain or modify the specification and size of products.



機械式C型單曲軸沖床 C Type Single Crank Press



主要規格與尺寸 Specification And Dimensions

型式	Model	FCP-25		FCP-35		FCP-45		FCP-60		FCP-80		FCP-110		FCP-160		FCP-200		FCP-250			
		S	H	S	H	S	H	S	H	S	H	S	H	S	H	S	H	S	H		
噸數	Capacity	Tf		200	250	160	110	80	60	45	35	25									
行程	Length of stroke	[D] m.m.		80	50	90	60	110	70	130	80	150	150	180	110	200	130	220	150	250	180
行程數	Stroke per minute	Fixed speed	S.P.M.	90	100	80	100	70	90	60	80	60	60	50	70	40	60	35	50	30	45
				Variable speed		70-110	80-140	60-95	70-130	50-85	60-120	40-140	55-110	40-75	40-75	35-65	45-90	30-50	35-70	25-40	30-60
衝力發生位置	Tonnage rating point	[B.C.D.] M.m.		3.2	3.2	3.2	4	5	5	5	6	6	6	6	6	6	6	6	6	6	
閉合工作高度	Shut height	[S.H] m.m.		230	200	250	220	270	240	300	270	330	300	350	320	400	360	450	400	450	400
衝頭底面面積	Area of slide	[P X Q] m.m.		330X250	380X300	430X350	480X400	560X460	650X520	720X580	860X650	950X720									
衝頭調整量	Adjustment of slide	[G] m.m.		50	50	60	70	80	90	100	110	120									
衝頭孔徑	Diameter of cushion pin	M.m.		Ø38.1	Ø50.8	Ø50.8	Ø50.8	Ø50.8	Ø50.8	Ø50.8	Ø65	Ø65	Ø65	Ø65	Ø65	Ø65	Ø65	Ø65	Ø65	Ø65	Ø65
平板厚度	Thickness of bolster	[T]m.m.		85	100	115	130	140	150	150	180	180									
平板面積	Area of bolster	[E X F]m.m.		700X320	780X400	800	900X520	1050X640	1150X700	1250X800	1400X840	1500X900									
作業高度	Height of bolster	[Z]m.m.		800	800	840X440	900	900	925	925	1000	1000									
主馬達	Main motor	Fixed speed	HPXP	3X4	3X4	5X4	7.5X4	7.5X4	10X4	15X4	20X4	25X4									
				Variable speed		5X4	5X4	7.5X4	10X4	10X4	15X4	20X4	25X4	30X4							
衝頭調整馬達	Motor for slide adjustment	HPXP		-	-	-	0.5X4	0.5X4	0.5X4	1X4	1X4	2X4									
側牆間距	Side distance	[R]m.m.		393	490	515	544	570	660	730	900	900									
機架尺寸	Foot size	[A X B]m.m.		720X1058	830X1125	890X1210	940X1315	1060X1500	1180X1693	1300X2005	1480X2113	1560X2400									
基礎螺栓位置	Position of bolts	[M X N]m.m.		620X860	730X925	790X1010	840X1115	950X1380	1060X1490	1180X1615	1360X1905	1440X2220									
佔地面積	(Floor space required)	[W X L]m.m.		970X1280	1075X1410	1120X1490	1165X1600	1270X1840	1390X2040	1490X2345	1670X2475	1715X2790									
總高度	Over all height	[H]m.m.		2060	2180	2340	2540	2750	2985	3352	3715	3982									
精度	Accuracy			CNS 1st	CNS 1st	CNS 1st	CNS 1st	CNS 1st	CNS 1st	CNS 1st	CNS 1st	CNS 1st									

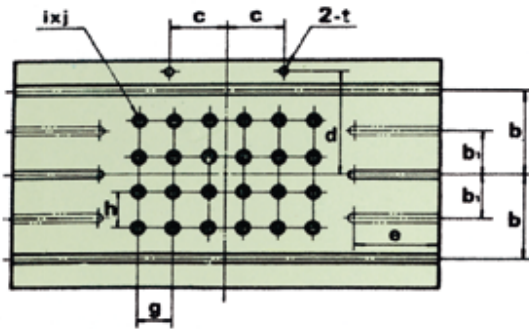
緩衝裝置(特殊附件) DIE CUSHION(OPTIONAL)

能力	Capacity (at 5kgf/cm ²)	Tf	2.2	2.2	3.5	3.5	6	8	10	14	14
行程	Length of stroke	M.m.	50	50	70	70	80	90	100	110	120
面積	Area pad(R.L. X F.B.)	M.m.	295X210	295X210	330X235	330X235	400X300	482X300	532X340	620X440	740X540

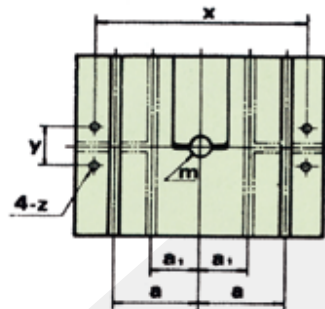
所有規格及外型尺寸，本公司保有修改權利

We reserve all rights to maintain or modify the specification and size of products.

平板尺寸與衝頭底面尺寸 DIMENSIONS OF BOLSTER PLATE AND RAM



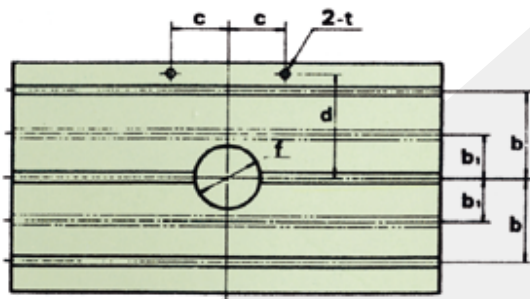
平板尺寸圖(附模墊)
Surface of Bolster(with die cushion)



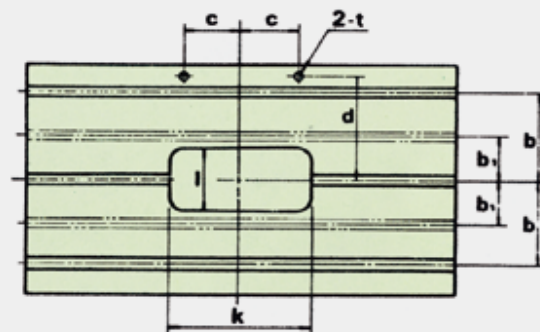
衝頭底面尺寸圖
Surface of Ram



T型槽尺寸圖
Size of T-slot



平板尺寸圖(圓孔型)
Surface of Bolster(with circle hole)



平板尺寸圖(標準型)
Surface of Bolster(standard)

SPECIFICATION

MODEL	FCP-25	FCP-35	FCP-45	FCP-60	FCP-80	FCP-110	FCP-160	FCP-200	FCP-250
a	105	130	140	150	160	180	260	300	350
a1	-	-	-	-	-	-	160	170	200
b	100	125	140	150	180	210	300	320	350
b1	-	-	-	-	-	-	150	160	200
c	130	130	150	150	150	150	200	200	250
d	135	170	185	200	250	300	350	380	410
e	-	210	220	240	270	280	290	320	320
f	Ø100	Ø110	Ø130	Ø150	Ø180	Ø200	Ø220	Ø250	Ø270
g	65	65	75	75	75	90	100	100	100
h	90	90	100	100	75	90	100	100	100
i	15pcs	15pcs	15pcs	15pcs	24pcs	24pcs	24pcs	35pcs	48pcs
j	Ø26	Ø26	Ø26	Ø26	Ø26	Ø32	Ø32	Ø32	Ø32
k	200	220	260	300	360	400	440	500	540
l	100	110	130	150	180	200	220	250	270
m	Ø38	Ø50.8	Ø50.8	Ø50.8	Ø50.8	Ø50.8	Ø65	Ø65	Ø65
n	22	22	22	22	28	28	28	28	28
p	22	22	22	22	29	29	29	29	29
q	16	16	16	16	20	20	20	20	20
s	38	38	38	38	48	48	48	48	48
t	Ø22	Ø26	Ø26	Ø30	Ø30	Ø30	Ø30	Ø30	Ø30
x	290	340	370	400	480	560	630	750	850
y	70	70	80	90	90	100	130	140	160
z	Ø18	Ø18	Ø18	Ø18	Ø23	Ø23	Ø23	Ø23	Ø26

標準附件

- 油壓式超負荷安全裝置
- 電動式衝頭調整裝置
- 數字式模高指示器
- 衝頭平衡裝置
- 旋轉凸輪控制器
- 二度落防止裝置
- 電磁式計數器
- 誤送檢知裝置
- 氣壓快速接頭
- 電燈插座
- 維護工具

General Attachments

- Hydraulic Overload Protector.
- Electrical Ram Adjusting Device.
- Die Height Indicator.
- Balancers Unit of Slide.
- Rotary Cam Limit Switch.
- Antirepeat Safety Device.
- Magnetic Strokes Counter.
- Miss Feed Detector.
- Air Outlet.
- Electrical Socket.
- Maintenance Tools.

所有規格及外型尺寸，本公司保有修改權利

We reserve all rights to maintain or modify the specification and size of products.

選擇性配備

- 自動送料軸
- 氣壓式模墊裝置
- 光電式安全裝置
- 無段變速馬達
- 頂料裝置
- 腳踏開關
- 氣壓式吹料裝置
- 預計式計數器
- 防震腳

Optional Attachments

- Driving Shaft of Self Feeder.
- Pneumatic Die Cushion.
- Photoelectric Safety Device.
- Variable Speed Motor.
- Knockout Device.
- Foot Switch.
- Air Ejector.
- Preset Counter.
- Shock Isolator.



精益求精、追求至善

PRESS



豐煜油壓機械股份有限公司
FONYU MACHINERY CO., LTD

台灣省桃園市龍潭區三和里店湖一路90號
No.90, Diann Hwu 1Road, Sanho Village, Lungtan District Taoyuan
City, Taiwan.
Tel : 886-3-4799668 · 4792099 分機37、55
Fax : 886-3-4799991
E-mail : fonyu@fonyu.com.tw
<http://www.fonyu.com.tw>